

Web-based Data Exploitation

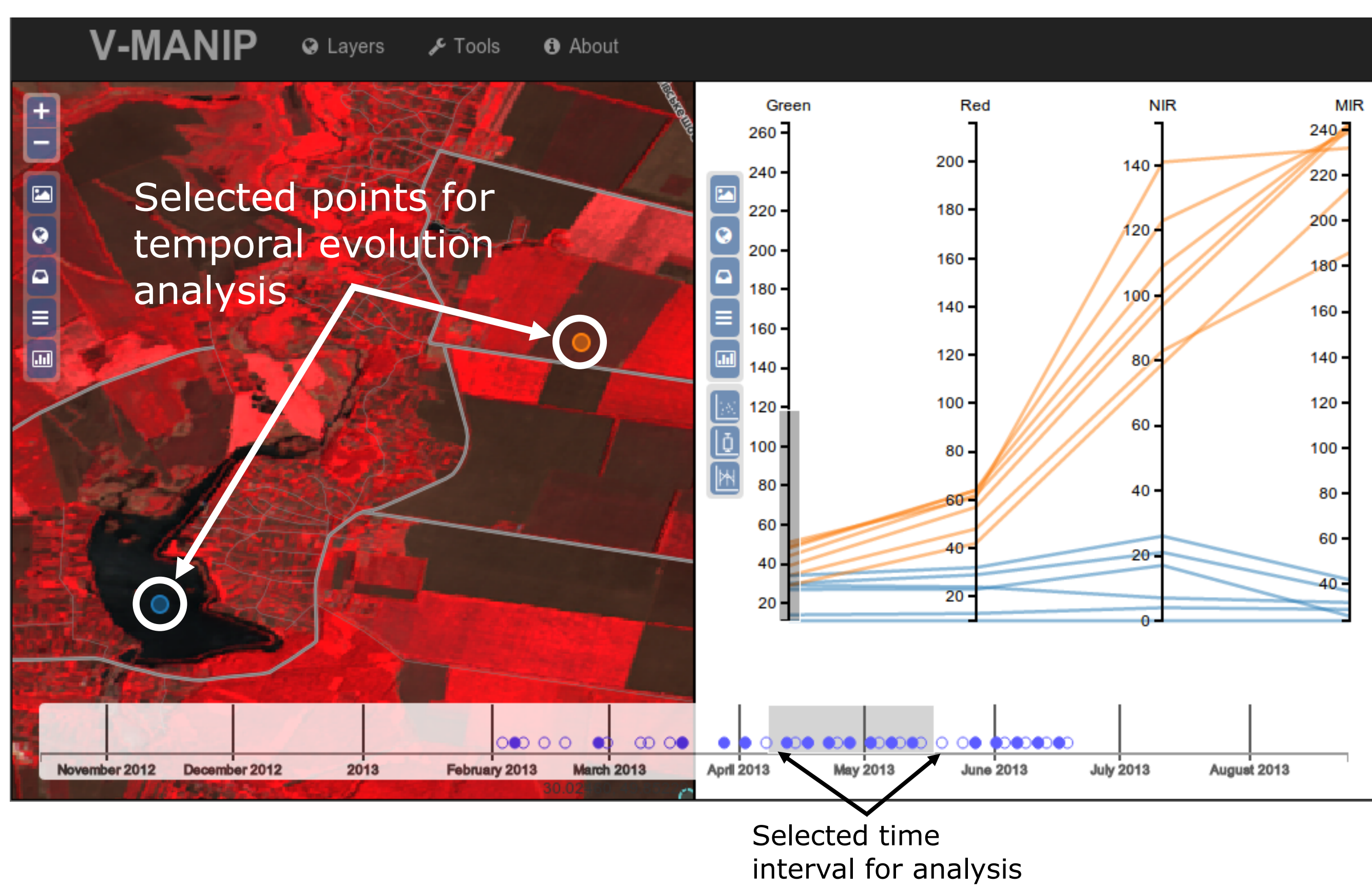


2014 Conference on
Big Data from Space (BiDS '14)

GSTP - ESA/ESRIN Contract Nr.4000107441/12/I-AM

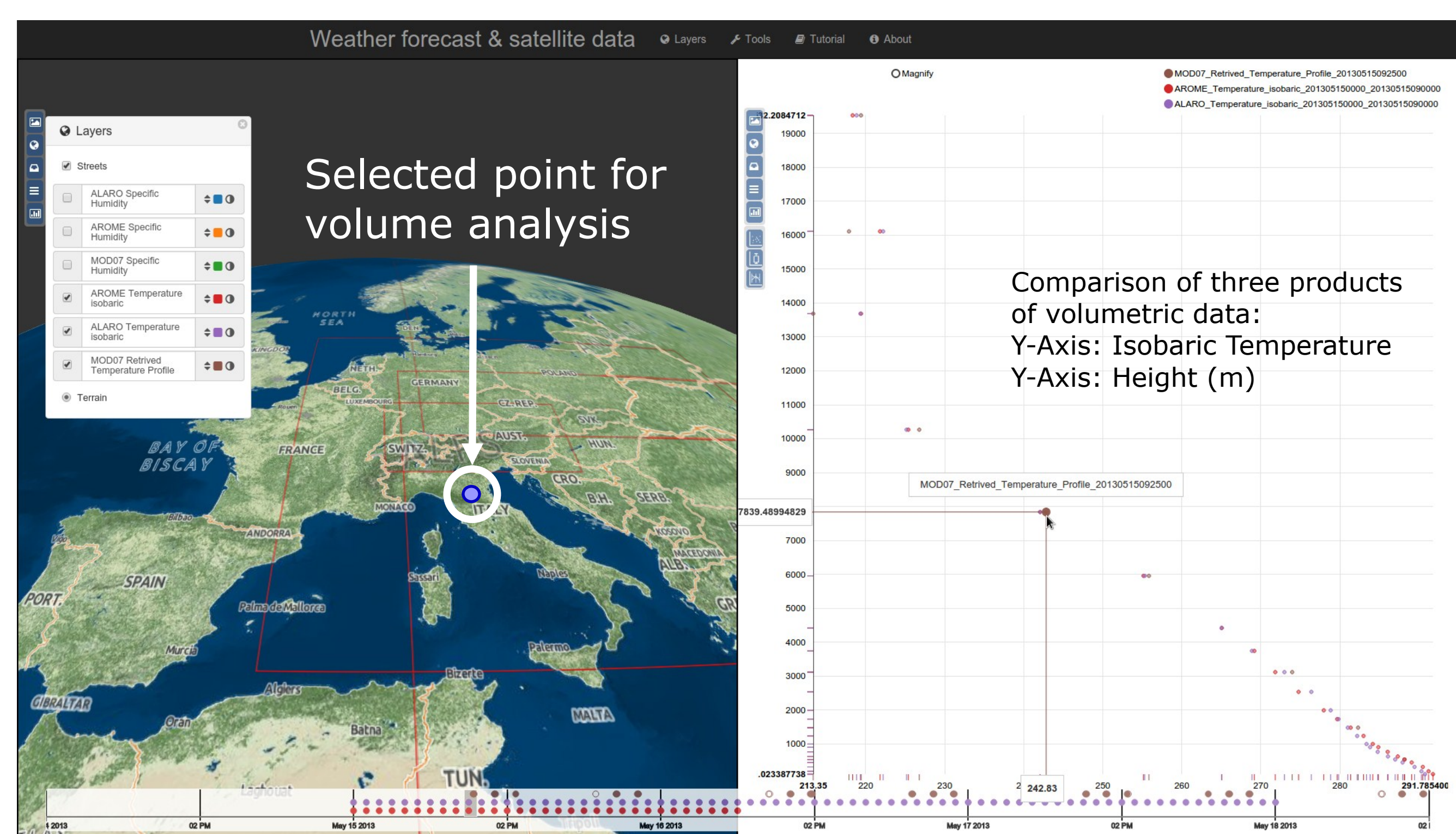
Visual Analytics Subsystem

- Interactive, visual analysis of Earth observation data
- Apply methods of information visualization
- Detailed investigation of selected data sets
- Allows intuitive comprehension of complex data and its relations
- Makes outliers and clusters easily perceptible



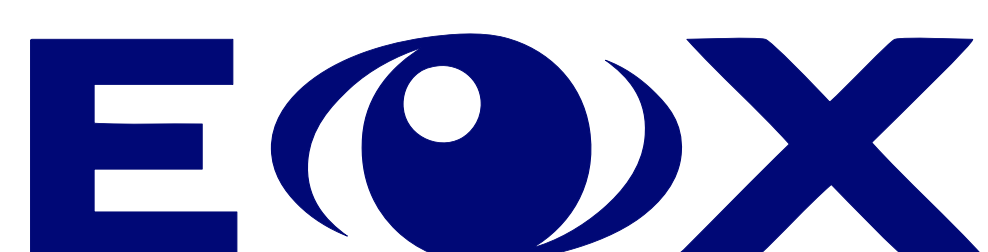
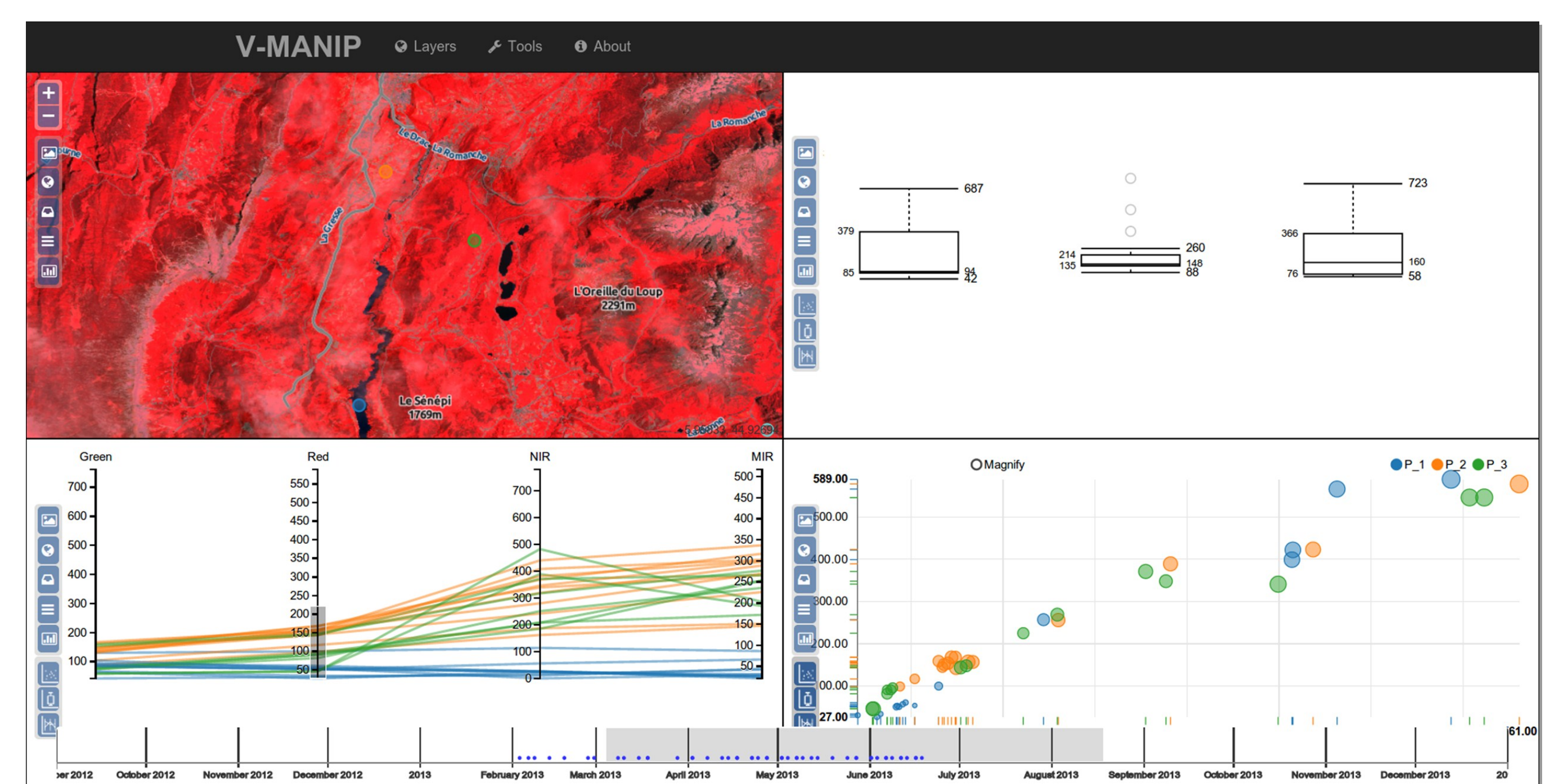
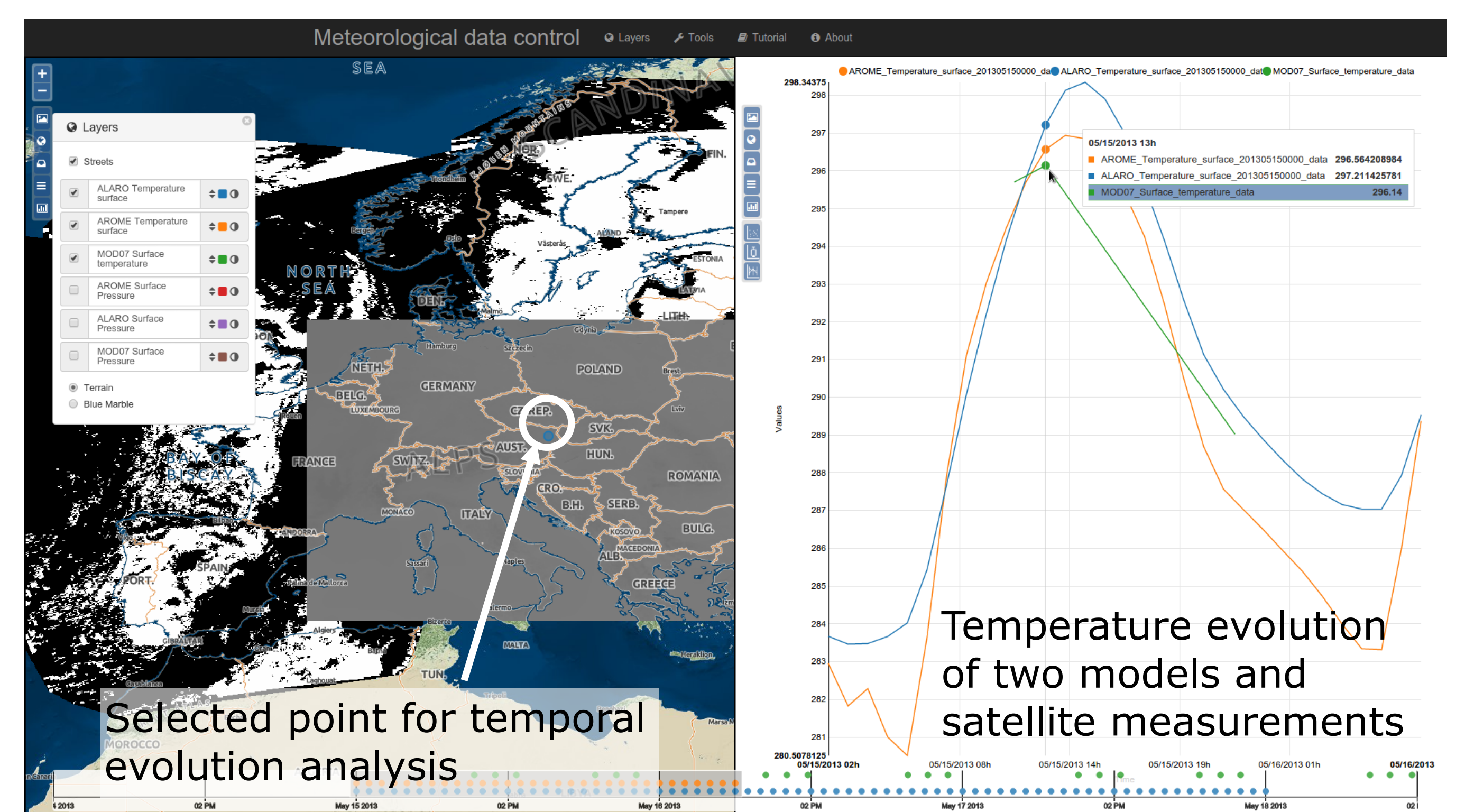
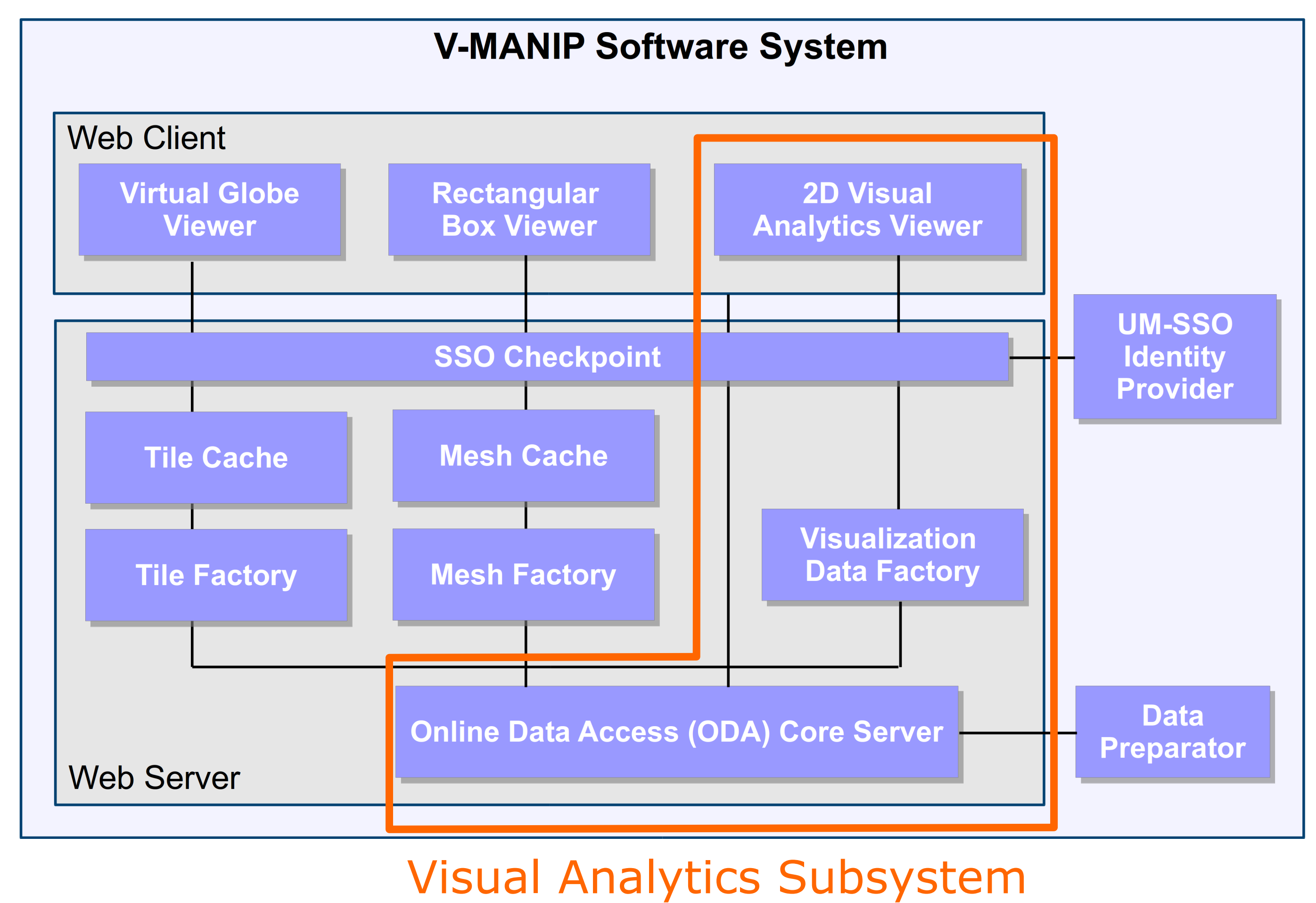
V-MANIP Technology

- OGC Web Processing Service (WPS) Interface
- Embedded in multi-view web-client
- Preserves the geospatial context
- Data pre-processing by dedicated server component



Subsystem Technology

- Based on Javascript library D3.js - Data-Driven Documents
- Easily expandable, modular architecture
- Support of multiple data formats (time series, multivariate data, matrices, arrays, multi-dimensional data)
- Provides different interactive views:
 - Box Plot: for statistical analysis
 - Scatter Plot: for data relationship
 - Parallel Coordinates: for relations of multivariate values
 - Streamlines: for direct visual comparison of time series



zentrum für
virtual reality und visualisierung
forschungs-gmbh

